

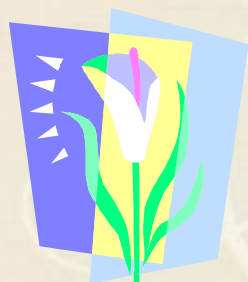
Featured Speaker

We are privileged to have Dr. Charleyse Pratt back again this year for another dynamic message.

Dr. Charleyse Pratt is married to District Elder Gregory A. Pratt, Pastor of the Emmanuel Apostolic Church in Cleveland, Ohio. In the Ministry, Dr. Pratt is the First Lady and serves in many capacities including Director of Women's Ministry, Director of Christian Education, and Coordinator for Special Programs and Events. Pastor and First Lady are parents to Elder Bryan Pratt, and Tiffany and Jarrett.



Dr. Pratt is passionate about education. She works at Cleveland State University as the Director of Learning Communities Activities.



LiLY's Mission

To equip and guide women into a deeper relationship with our Lord and Savior Jesus Christ. We seek to engage women from all walks of life in prayer, study of scripture, fellowship, and reaching out to others.

LiLY Women's Ministry is sponsored by Edgehill Community Church in Cleveland Heights, Ohio



Weekend Highlights

Friday Evening –April 27, 2012

Check-in—registration begins at 4:00 pm
Manager's Reception in the Atrium
Dinner on your own with friends
Welcome, Praise and Worship at 7:30 pm

Saturday-April 28, 2012

Breakfast for hotel guests
Morning Sessions
Dr. Charleyse Pratt
Lunch
Afternoon Sessions
Free Time— Relax, exercise, swim or go to the sauna. Hotel shuttle to near by shopping.
Manager's Reception in the Atrium
Dinner
Small group intercessory prayer
Café Praise— We are once again blessed to have a chance for all of you artistic women of God to share your gifts of song, dance, spoken word, and visual art. (Note: 3 minute time limit please). Call Tamar at 216-297-1468 if you are interested.



Sunday Morning-April 29, 2012

Breakfast for hotel guests
Praise and Worship
Message
Communion
Conference ends at 11:00 am



LiLY Women's Ministries Living Life for You

Ninth Annual Women's Conference



WHERE WOMEN BASK IN GOD'S PRESENCE

April 27-29, 2012

*Be still and know that I am
God.*

Psalm 46:10

LiLY Women's Ministry is proud to present its **ninth** Annual Women's Conference at the fabulous Embassy Suites, Beachwood, Ohio.

Wishing you could sneak away for a relaxing time at the beach? A time to slow down, wiggle your toes in the sand, and bask in the warmth of God's presence? We've got the perfect plan! We are so excited to invite you to join us at our SeaSide Escape. We'll enjoy a lot of fun and food, make new friends, worship, and learn from each other during meaningful activities and devotions.

What could be more soothing and calming to your soul than two days at the seashore? How about a weekend that's spent making new friends, reconnecting with old, and studying and reflecting on God's Word?

This year's conference is different than past years. The weekend is broken up into seven sessions that build on one another:

Session 1

Beach Bag– During this session women are challenged to consider what baggage they have that is making it hard for them to trust God.

Session 2

Sunshine- This session makes it easy for the women to get to know each other.

Session 3

Sand - What happens when God is in control.

Session 4

Waves - Slow down with stillness, music and reflection.

Session 5

Pearl - God is always changing us into something more beautiful and valuable than we can imagine.

Session 6

Starfish - This is a service project to give to women who are going through difficult and painful situations.

Session 7

Message in a Bottle– Rejoicing in God's love and faithfulness.

Registration Cost for the Weekend

There is a \$55.00 registration fee which covers the meeting facilities, speakers, conference bag with goodies, plus lunch and dinner on Saturday.

Hotel Cost

The LiLY conference will be held at the **Embassy Suites which is located at 3775 Park East Drive, Beachwood, Ohio 44122.**

The cost for the hotel is \$126.71 per night, per suite (total-\$253.42 for both nights). Share the cost - the suite can accommodate up to six ladies.

The suites include breakfast, two doubles or a king size bed and a queen pull-out sofa-bed. Registration will be available starting in January.

Hotel Reservations

To make your reservations by phone call **1-800-317-1960** or **216-765-8066**. Tell the hotel you are with the LiLY Conference.

or you may register online at:
<http://www.edgehillcc.org/lily>
Click on the hotel registration link.

Deadline for hotel reservations is April 6, 2012.

For more information, please contact:
Pat Shiels at (216) 297-9901
(pat@bshiels.com)
or **Tamar Gray** at (216) 258-4120
(lgraybass@roadrunner.com)

Send registration fee and form to:

Edgehill Community Church
c/o Rosa Hulse
4499 Canterbury Rd.
North Olmsted, Ohio 44070

Make checks payable to **Edgehill Community Church.**

LiLY Conference Registration Form
(Please detach and return with payment). **EACH** registrant must turn in a form.

Name	Address	Emergency Phone	Phone	E-mail
------	---------	-----------------	-------	--------

Registration is \$55.00 per person. Please make checks payable to **Edgehill Community Church**. Payment and registration form are due no later than April 6, 2012.